



Pressurized Sprayer

OPERATION AND USE

Filling Sprayer:

Always depressurize tank before removing any sprayer parts. Depressurize tank using one of two methods:

- 1.) Turn sprayer upside down and depress the trigger until all pressure has been released. If fluid is present in sprayer when using this method, some fluid may be expelled out.
- 2.) Remove black cap from filler valve stem **(A)** and depress valve core until all pressure escapes.

Once all the air has been released from sprayer, remove the 15/16" hex filler cap as shown in **(B)**. Fill sprayer 2/3 full (32 oz maximum liquid capacity) with light, clean fluid. Make sure fluid is free of any foreign particles. Replace 15/16" hex filler cap and tighten **(B)**.

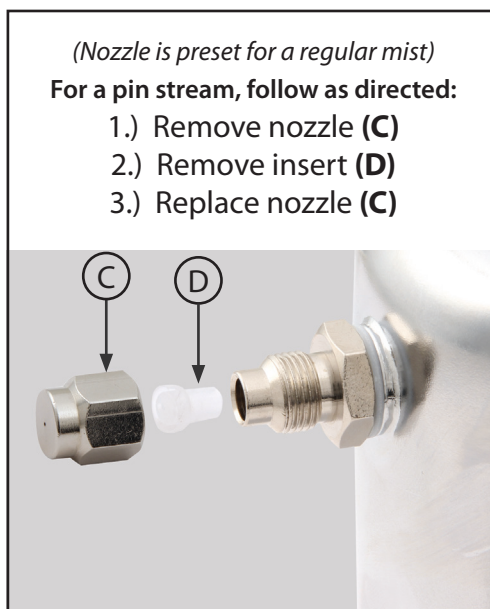
Charging Sprayer:

Compressed air from a standard air chuck on the valve stem is all that is required to charge the sprayer. Hold the air chuck on the filler cap until you hear the line pressure equalize with the sprayer. Working pressure is 80-150 psi. At least 80 psi is needed to spray the full 32 oz without a recharge of air.

Replace black cap on filler valve stem **(A)**.

For best results, fluid to be sprayed should be lighter than #10 motor oil. Thin with a suitable diluent until desired spray is obtained.

Caution: Never point the nozzle of the sprayer toward yourself or another person. Always point the nozzle of the sprayer away from yourself and toward your intended target area before depressing the trigger. Practice good safety by always assuming tank is charged and contains fluid if uncertain.



Allstar Performance 8300 Lane Dr., Watervliet, MI 49098
Phone: (269) 463-8000 Fax: (800) 772-2618 www.allstarperformance.com